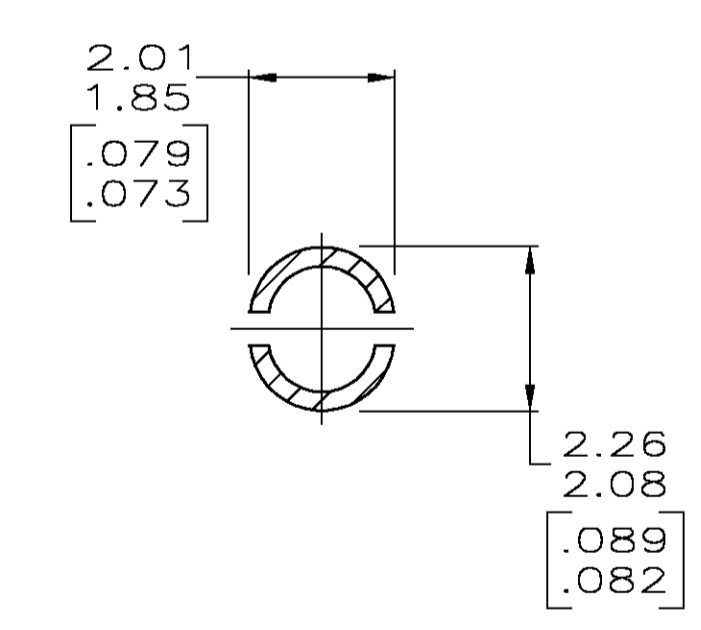
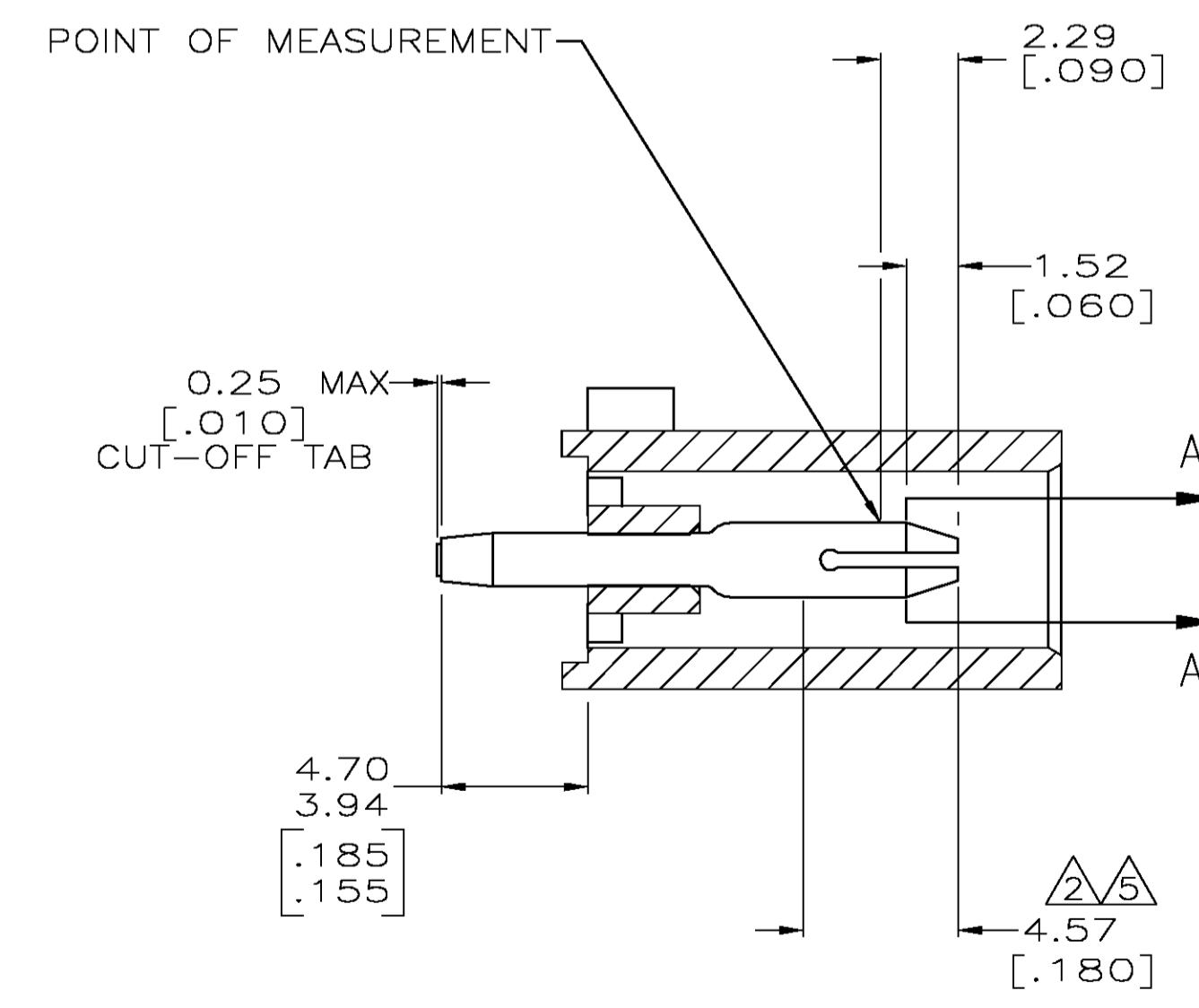
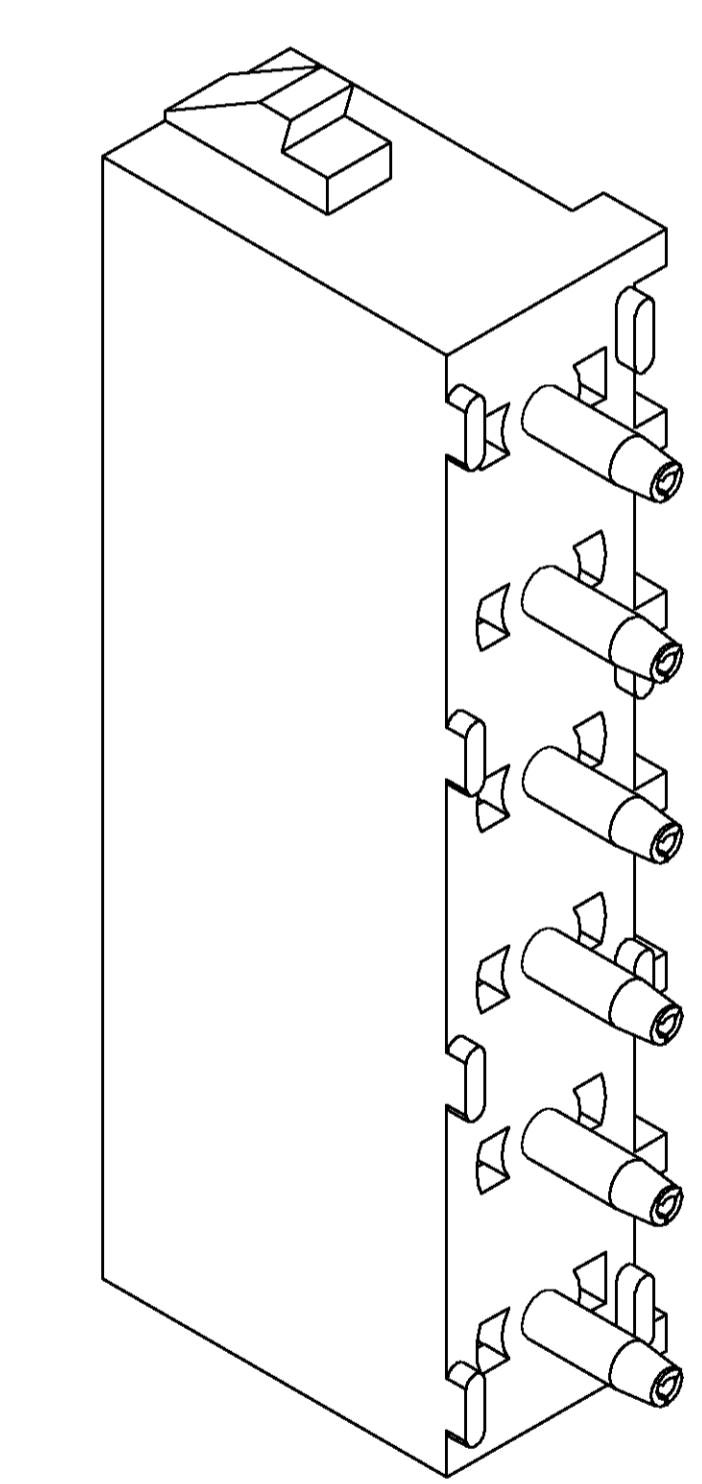
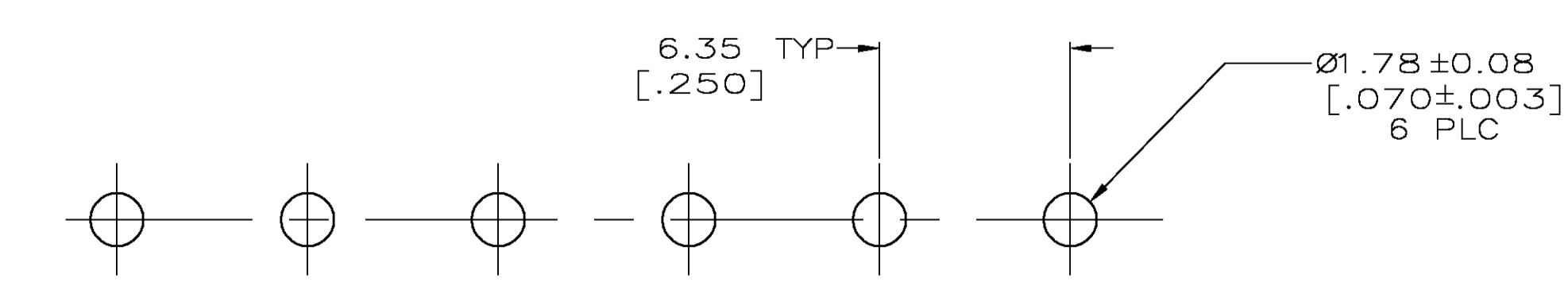


- PARTS COMPLY TO AMP SOLDERABILITY SPECIFICATION 109-11-3.
- CONTACT IS PLATED OVERALL WITH 0.00127 [.000050] NICKEL, THEN 0.00076 [.000030] GOLD OVER CONTACT LENGTH INDICATED AND MATTE TIN LEAD ON SOLDER TAIL END.
- CIRCUIT IDENTIFICATION CHARACTERS ARE ADJACENT TO THE INDICATED CAVITIES, BUT LOCATION AND ORIENTATION MAY DIFFER FROM PRINT.
- DIMENSIONS IN BRACKETS ARE IN INCHES.
- CONTACT IS PLATED OVERALL WITH 0.00127 [.000050] NICKEL, THEN 0.00076 [.000030] GOLD OVER CONTACT LENGTH INDICATED AND MATTE TIN ON SOLDER TAIL END.

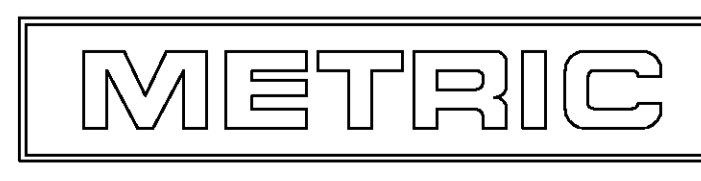


SECTION A-A
SCALE 10:1



RECOMMENDED MOUNTING HOLE PATTERN
FOR 1.57 [.062] THICK P.C. BOARD

PHOSPHOR BRONZE, GOLD	NYLON, UL94V-2, NATURAL	641832-3
PHOSPHOR BRONZE, GOLD	NYLON, UL94V-2, NATURAL	641832-2
PHOSPHOR BRONZE, PRE-TIN	NYLON, UL94V-2, NATURAL	641832-1
PIN CONTACT MATERIAL AND FINISH	HOUSING MATERIAL	PART NUMBER



THIS DRAWING IS A CONTROLLED DOCUMENT.		DMN B. LEWIS 10-05-98	Tyco Electronics Corporation Greensboro, NC 27409
DIMENSIONS: mm [INCHES]		CHK R. SWING 10-05-98	
TOLERANCES UNLESS OTHERWISE SPECIFIED:		APVD M. TRULL 10-05-98	NAME PIN HEADER ASSEMBLY, 6 CIRCUIT UNIVERSAL MATE-N-LOK™
0 PLC ± -		APPLICATION SPEC	SIZE A1
1 PLC ± -		RESTRICTED TO	CAGE CODE 00779
2 PLC ± 0.13 [.005] [0.051]		WEIGHT	DRAWING NO. 641832
3 PLC ± -		CUSTOMER DRAWING	SCALE 5:1
4 PLC ± -		SHEET 1 OF 1	REV L
ANGLES ± - 0° 30'			